



QRD1000 E/M

RFID reader for access control. 2 years warranty.

QR1000 E/M is an elegantly designed RFID access control terminal. Its IP67 waterproof and dustproof level allows for direct outdoor installation, and it is even capable of operating normally under extreme weather conditions in a temperature range of $-20^{\circ}\text{C}\sim 65^{\circ}\text{C}$.

Its large storage capacity of up to 100,000 users/cards and 600,000 transactions is perfectly applicable to companies with a large number of workers.

As an advanced terminal, it is equipped with 2 locking relays, alarm control, SRB for enhanced security, and auxiliary smoke detection input for fire safety connection.

QUALICA-RD QRD1000 E/M

Features

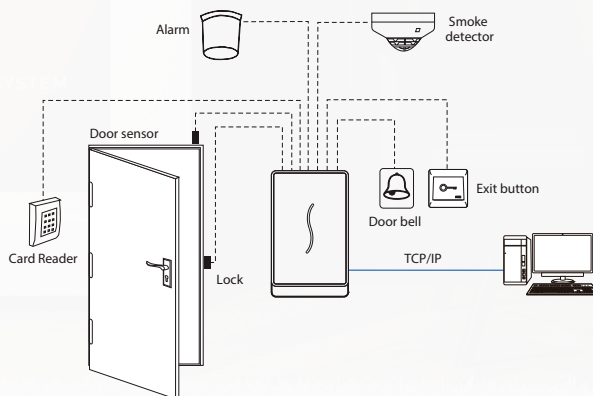
- IP-based terminal
- Supports standalone or networked deployment
- IP67 waterproof design, suitable for indoor or outdoor use
- Temperature: -20°C ~ 65°C (-4°F ~ 149°F)
- Full access control functions



Specifications

| | |
|---------------------------------|----------------------------------------------------------------------------------------|
| Capacity | Users /Cards: 60,000 (standard) 100,000 (optional) Transactions: 600,000 |
| Communication | TCP / IP RS232 / RS485 Wiegand input / output Safety relay box |
| Access control interface | Lockout relay output Alarm / Auxiliary Input Exit button Door sensor Doorbell |
| Hardware | CPU 1,0GHz, 64MB RAM 28 MB Flash Reader 125KHz EM 13.56 MHz MF (optional) |
| Standard functions | Access levels Groups Holidays Bell schedule |
| Compatibility | Wiegand slave reader Qualica-RD Access Control BIOS Software |
| Special functions | IP67 |
| Additional information | Working temperature: -20 °C ~ 65 °C (-4 °F ~ 14.9 °F) Dimensions: 131 x 80 x 20.6 mm |
| Feeding | Operating voltage 12V DC Power socket < 500mA |

Configuration



Dimensions (mm)

