

 **Warranty 2 years**



## QRD1000IFACE-PM

Outdoor capable terminal with a variety of authentication options.

**QRD1000IFACE-PM** is a high-end, stand-alone access control terminal, equipped with visible light and built in rugged metal for outdoor use.

This series includes three models: **QRD1000IFACE-PM-H12**: Facial, fingerprint and dual card. **QRD1000IFACE-PM-HQR12**: Facial, QR reader and dual card. **QRD1000IFACE-PM-12**: Facial and dual card.

Supports multiple authentication methods: facial recognition, fingerprint, palm and QR codes. Supports RFID modules and up to 100+ card types. 30,000 facial/ 10,000 fingerprints/ 3,000 palms (optional)/ 500,000 RFID cards and 500,000 records.

Supports PUSH communication protocol, equipped with the latest hybrid biometric technology and Qualica-RD Access Bios software.



# QRD1000IFACE-PM (H12, HQR12, 12)

## Features

- The reader is IP66 waterproof and IK07 anti-collision.
- High-strength aluminum alloy housing with IK07 anti-vandalism structure.
- IP66 waterproof and dustproof.
- Operating temperature from -30°C to 60°C, suitable for extreme environments.
- Supports IEEE 802.3af/at Power over Ethernet standard.
- Supports multiple RFID modules and up to more than 100 card types (including ID / IC / Legic / Desfire EV1 / Desfire EV1 / Desfire EV2).
- Legic / Desfire EV1 / EV2 / HID Prox. / HID iClass / etc.)
- Supports encrypted QR code as a highly secure mobile credential.
- HD video door phone via mobile application.
- Supports ONVIF (compatible with Profile S, Profile T, Profile G, Profile C, Profile Q and Profile A)
- for third-party NVR/VMS integration to act as a surveillance camera.
- Built-in web server for system configuration.

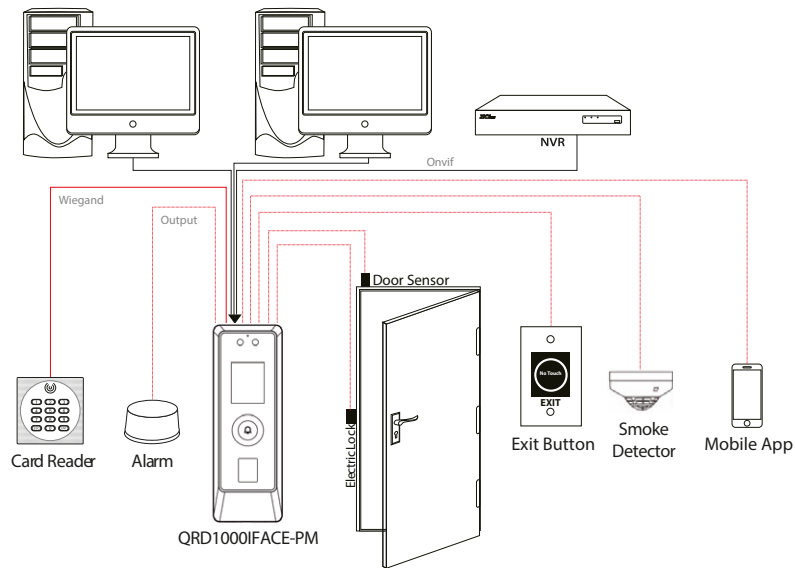
## Technical specifications

Model	H12	HQR12	12
Display	2-inch non-touch screen	2-inch non-touch screen	2-inch non-touch screen
Biometrics	Face and Footprint	Face only	Face only
QR code	/	/	QR Codes, PDF417, Matrix data, MicroPDF417, Azteca
RFID	Standard ID card, IC card (optional)	Tarjeta ID estándar, Tarjeta IC (opcional)	Standard ID card, IC card (optional)
User capacity	50,000	50,000	50,000
Card capacity	50,000	50,000	50,000
Face capacity	30,000	30,000	30,000
Fingerprint capacity	10,000	/	/
Record keeping capacity	500,000	500,000	500,000
Communication	TCP/IP,Wiegand,RS485	TCP/IP,Wiegand,RS48	TCP/IP,Wiegand,RS485
Operating System	Linux	Linux	Linux
Standard functions	ADMS, DST, Camera, 14-digit user ID, Access Levels, Groups, Holidays, Anti-passback, Record query, Alarm		
Access control interface	Third party electric lock, door sensor, exit button, alarm output, auxiliary input, etc.		
Optional functions	POE	POE	POE
Protocol Onvif	Standard	Standard	Standard
Power	12V 3A	12V 3A	12V 3A
Level of protection	IP66 / IK07	IP66 / IK07	IP66 / IK07
Working Temperature	-30°C~60°C	-30°C~60°C	-30°C~60°C
Working humidity	10% - 90%	10% - 90%	10% - 90%
Dimensions	68.7*194.7*28.3mm	68.7*194.7*28.3mm	68.7*194.7*28.3mm
Supported software	Qualica-RD Accesos Bios		



# QRD1000IFACE-PM (H12, HQR12, 12)

## Configuration



## Dimensions (mm)

